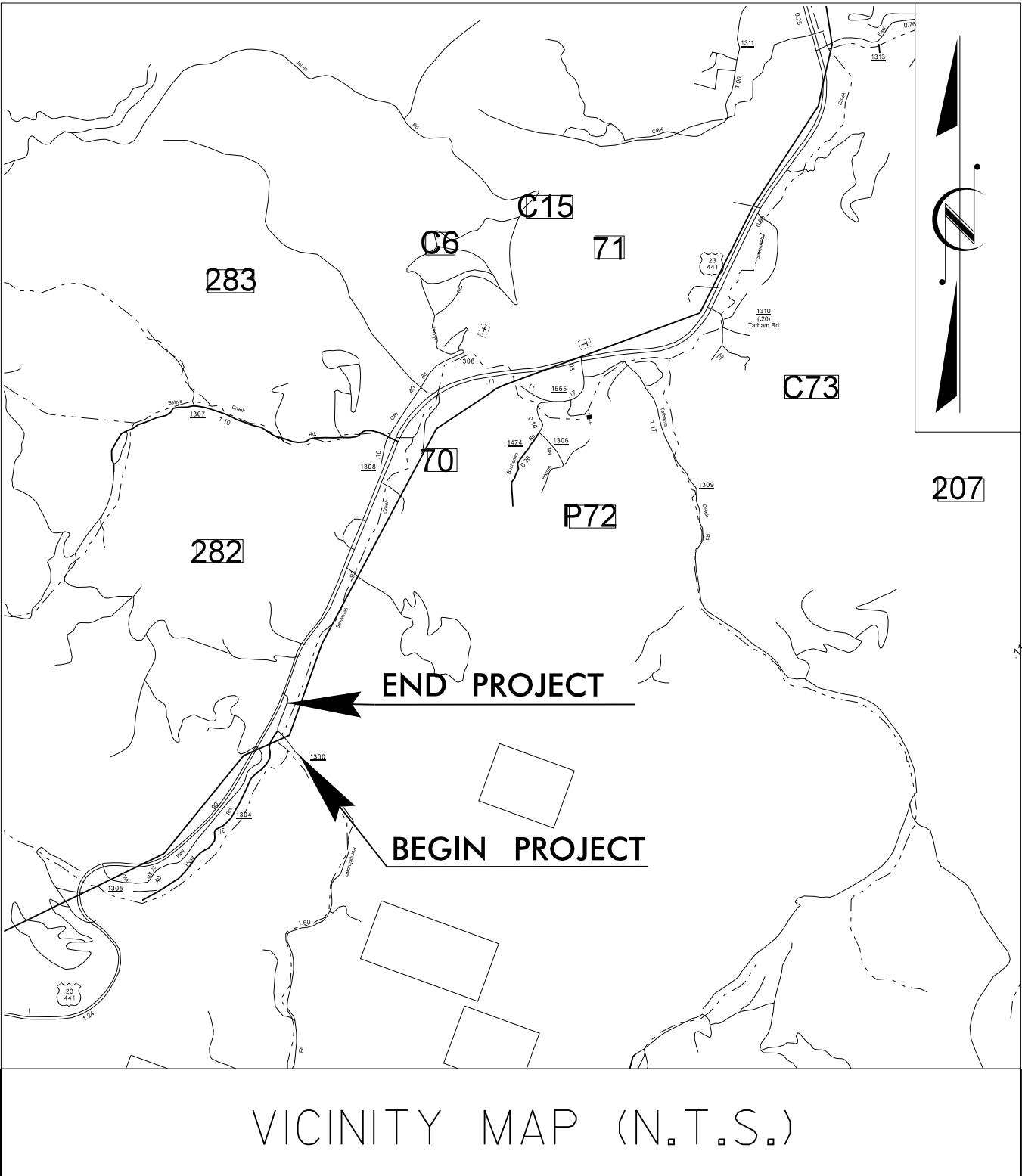
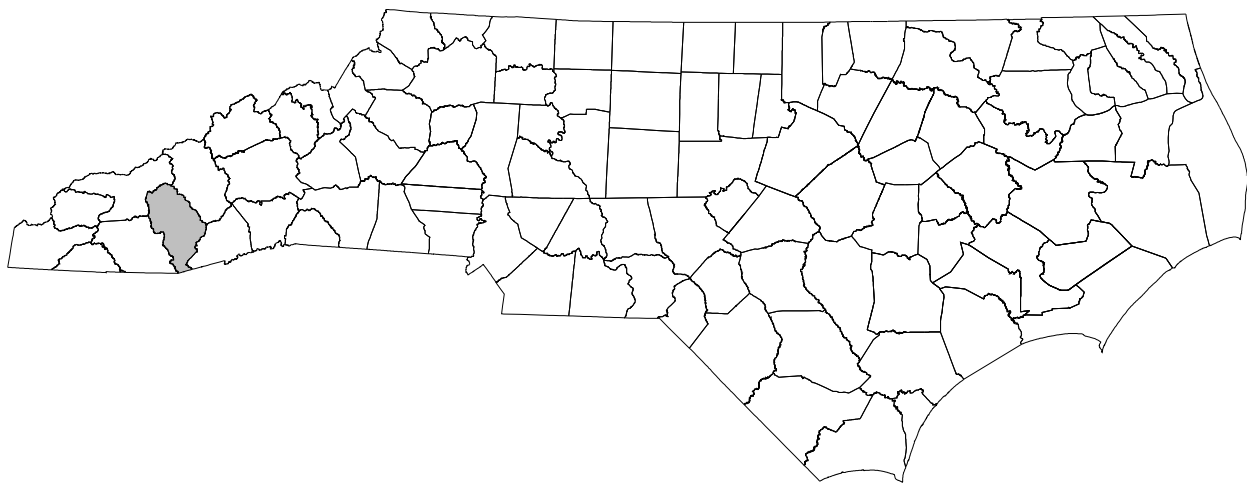


STATE OF NORTH CAROLINA
DIVISION OF HIGHWAYS

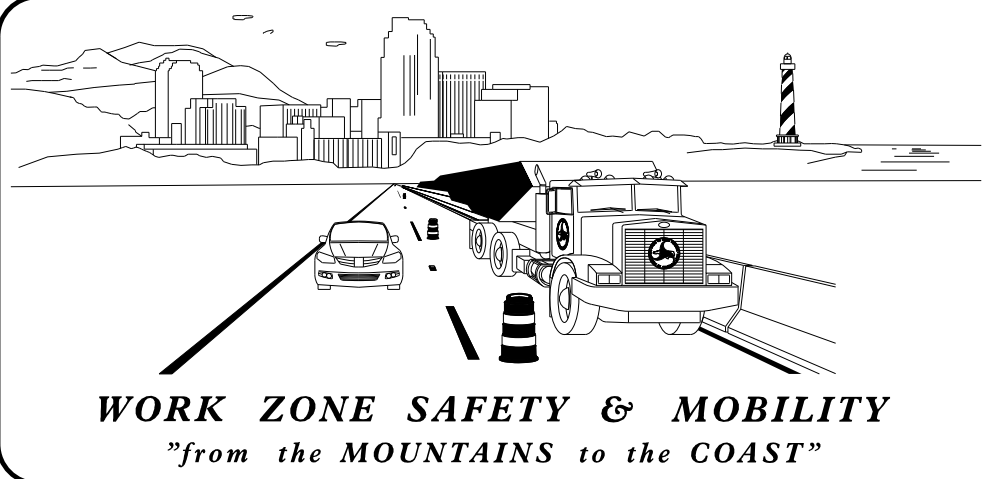
TRANSPORTATION MANAGEMENT PLAN

JACKSON COUNTY
DIVISION 14



LOCATION: BRIDGE NO. 490065 OVER SAVANNAH CREEK
ON SR 1300 (PUMPKINTOWN RD)

TYPE OF WORK: GRADING, DRAINAGE, PAVING, AND STRUCTURE



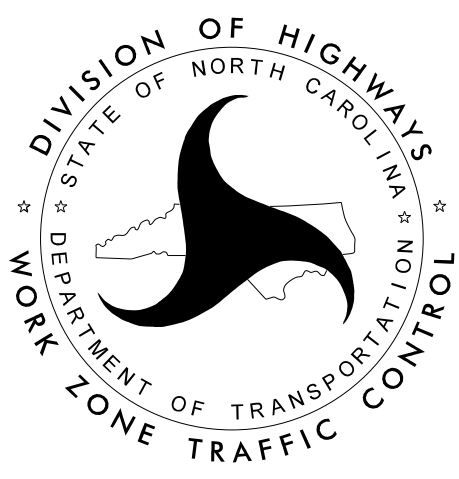
PLANS PREPARED BY:

COLTON M. RIDDLE, P.E.
PROJECT ENGINEER

ALEX FITZPATRICK
PROJECT DESIGN ENGINEER

NCDOT CONTACTS:

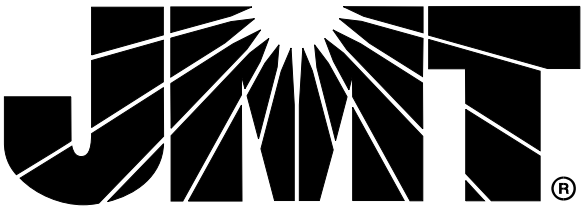
ZACHARY THOMAS SHULER, P.E.
DIV. 14 BRIDGE
PROGRAM/PROJECT MANAGER




INDEX OF SHEETS

SHEET NO.	TITLE
TMP-1	TITLE SHEET AND INDEX OF SHEETS
TMP-1A	LIST OF APPLICABLE ROADWAY STANDARD DRAWINGS AND LEGEND
TMP-1B	TRANSPORTATION OPERATIONS PLAN: (MANAGEMENT STRATEGIES, GENERAL NOTES, AND LOCAL NOTES)
TMP-1C	TEMPORARY SHORING NOTES
TMP-2	TEMPORARY TRAFFIC CONTROL PHASING
TMP-3	TEMPORARY TRAFFIC CONTROL PHASE I DETAIL
TMP-4	TEMPORARY TRAFFIC CONTROL PHASE II DETAIL
TMP-5	TEMPORARY TRAFFIC CONTROL PHASE III DETAIL

DOCUMENT NOT CONSIDERED FINAL
UNLESS ALL SIGNATURES COMPLETED



Johnson, Mirmiran, & Thompson Inc.
106 Asheville Commerce Parkway, Suite 100,
Candler, NC 28715
License No: C-3097

APPROVED: 

DATE: 11/25/2025

SEAL



SHEET NO.

TMP-1

B-6034

PROJECT: